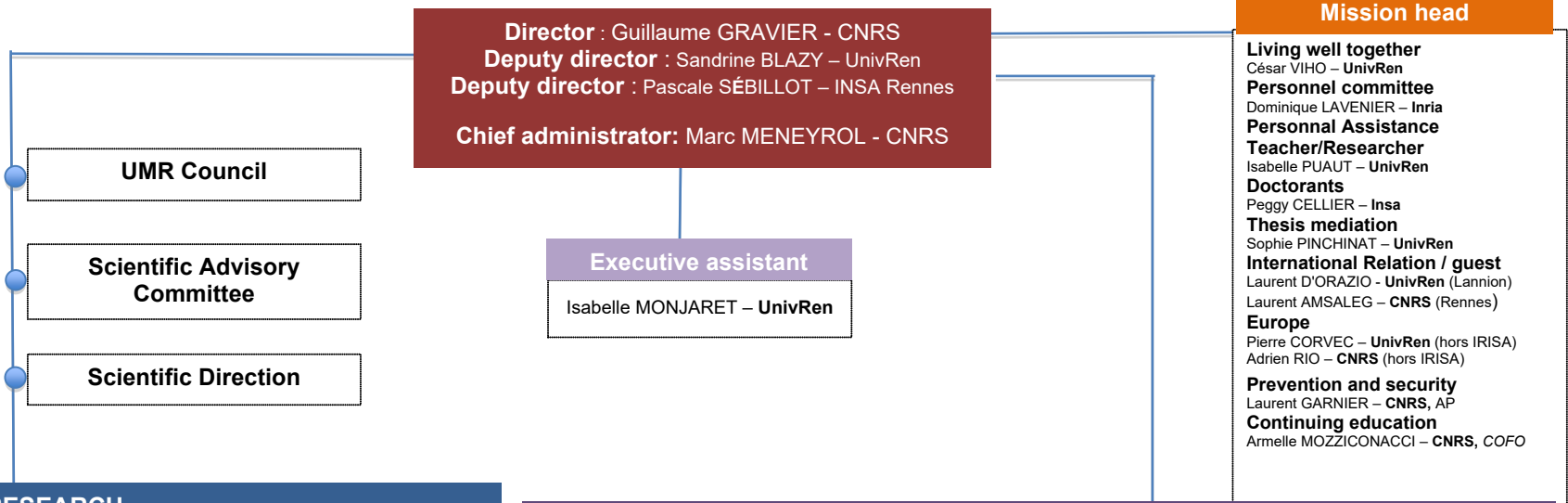


# Organisation chart

22 March 2024

IRISA UMR 6074  
Campus universitaire de Beaulieu,  
Bâtiment 12F,  
263 avenue du Général Leclerc, CS 74205,  
35042 Rennes cedex  
Tel. +33 (0)2 99 84 71 00

[www.irisa.fr](http://www.irisa.fr)



RESEARCH	
Research departments & teams	Cross actions
<b>D1 – Secure and large scale systems</b> David BROMBERG – UnivRen, Resp. CAPSULE, KERDATA, MAGELLAN, PIRAT\);, SPICY, WIDE	<b>EUR CyberSchool</b> Stéphane Szymanski, UnivRen, Resp.  <b>Pôle d'Excellence Cyber</b> CREACH LABS, recherche en cybersécurité Sandrine BLAZY - UnivRen, Resp. Research coord.
<b>D2 - Networks, telecommunication and services</b> Géraldine TEXIER – IMT Atlantique, Resp. ADOPNET, EASE, ERMINE, INZU, OCIF, SOTERN	<b>Transversal axis</b>  Cybersecurity  Artificial intelligence (AI)  Frugality, green IT  Art, culture & patrimony  Biology and health  Environment, ecology, agri/agro  Smart territories
<b>D3 - Architecture</b> Steven DERRIEN – UnivRen, Resp. GRANIT, PACAP, SUSHI, TARAN	
<b>D4 - Language and software engineering</b> Nicolas MARKEY – CNRS, Resp. DEVINE, DIVERSE, EPICURE, HYCOMES, LOGICA, SECREIZH	
<b>D5- Virtual reality, virtual humans, interactions and robotics</b> Ludovic HOYET - Inria, Resp. HYBRID, MIMETIC, RAINBOW, VIRTUS	
<b>D6 – Signal, image and language</b> Damien LOLIVE – UnivRen, Resp. EMPENN, EXPRESSION, LINKMEDIA, OBELIX, SIROCCO, SHADOC	
<b>D7 - Data knowledge management</b> Elisa FROMONT – UnivRen, Resp. DRUID, DYLISS, GENSCALE, LACODAM, SHAMAN	

SUPPORT FOR THE RESEARCH		
Resources and evaluation	Management and control	
<b>Testing and Development (SED)</b> Eric POISEAU - Inria, Resp.  <b>GenOuest support</b> - CNRS Technical Resp.  <b>Immersia support</b> Ronan GAUGNE – UnivRen, Technical Resp.  <b>Grid'5000 support</b> - , Technical Resp.  <b>RobStar support</b> Fabien SPINDLER – Inria, Technical Resp.  <b>Neurinfo support</b> Isabelle COROUGE – UnivRen, Technical Resp. (hors IRISA)  <b>Soutien EEWOK</b> Antoine COURTAY – UnivRen, Technical Resp.	<b>Team assistant Research (SAER)</b> Marie-Noëlle GEORGEAULT - Inria, Resp. – Inria interim Resp.	<b>General assistance division (SAG)</b> Marc MENEYROL - CNRS, Resp.  <b>Division:</b>  <b>User management</b> Isabelle MONJARET - UnivRen, Resp.  <b>Human resources</b> Anne BUZARÉ - CNRS, Resp.  <b>Financial resources</b> Antoine L'AZOU, CNRS, Resp.  <b>Communication resources</b> Catherine JACQUES-ORBAN – UnivRen, Resp.  <b>Project cellule</b>  Karine CHATEL - UnivRen, (Creach Labs) Benoît JOSSET – CNRS (coordination) Mariou GABOREL - UnivRen (coordination)
<b>DSI Inria / Team IRISA</b> Nicolas GOUBLE - Inria, Resp.	<b>IRISA site</b>  <b>UR-Lannion</b> François GOASDOUÉ – UnivRen, Resp.  <b>UBS-Vannes</b> Frédéric GUIDEC - UBS, Resp.  <b>CentraleSupélec-Cesson-Séviigné</b> Yves LOUET – CS, Resp.	
	<b>IMT Atlantique-Cesson-Séviigné</b> Géraldine TEXIER – IMT, Resp.  <b>INSA Rennes</b> Bertrand COÛASNON – INSA, Resp.	

Experimental Platforms					
<b>Immersia</b> Georges DUMONT ENS, Resp.	<b>Grid'5000</b> Anne-Cécile ORGERIE CNRS, Resp.	<b>GenOuest</b> Jacques NICOLAS Inria, Resp.	<b>Neurinfo</b> Emmanuel CARUYER CNRS Resp.	<b>RobStar</b> Paolo ROBUFFO GIORDANO CNRS, Resp.	<b>EEWOK</b> Olivier BERDER UnivRen Resp