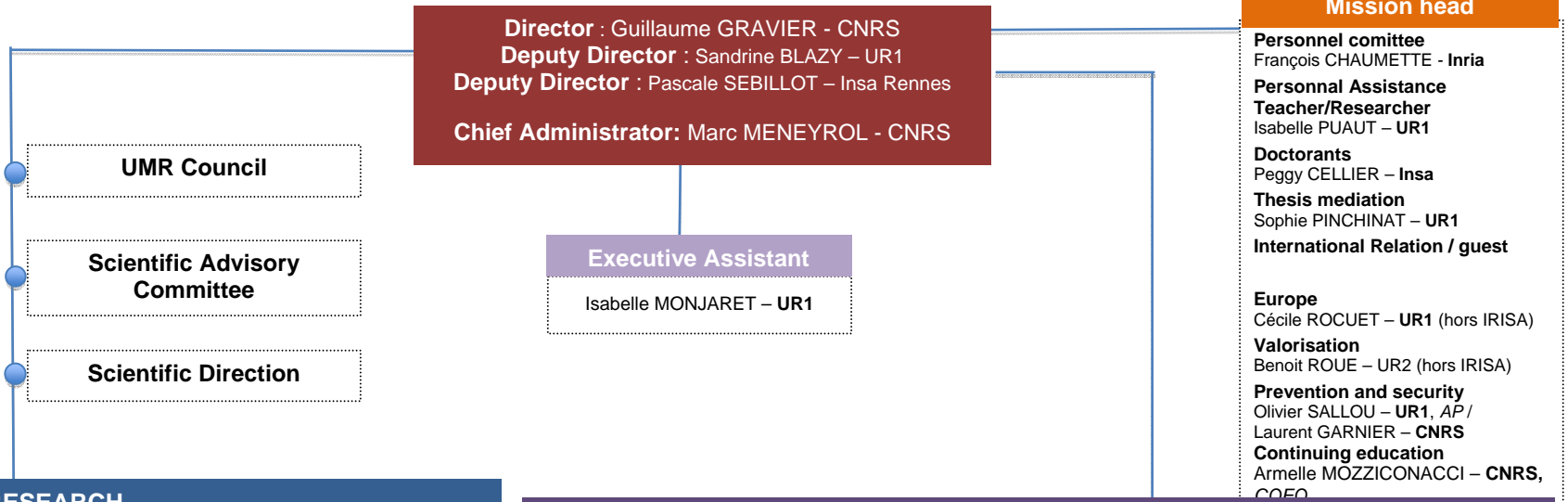


Organisation chart

January 2021

IRISA UMR 6074
Campus universitaire de Beaulieu,
Bâtiment 12F,
263 avenue du Général Leclerc, CS 74205,
35042 Rennes cedex
Tel. +33 (0)2 99 84 71 00

www.irisa.fr



RESEARCH		SUPPORT FOR THE RESEARCH							
Research departements & Research teams		Resources and evaluation							
Cross actions		Management and control							
<p>D1 - Large scale system (LSS) David BROMBERG – UR1, <i>Resp.</i> CIDRE, EMSEC, KERDATA, MYRIADS, WIDE</p> <p>D2 - Networks, telecommunication and services (NTS) Yann BUSNEL - IMTA, <i>Resp.</i> ADOPNET, CASA, DIONYSOS, EASE, OCIF</p> <p>D3 - Architecture (AAC) Steven DERRIEN – UR1, <i>Resp.</i> CAIRN, GRANIT, PACAP</p> <p>D4 - Language and software engineering (LES) Benoit CAILLAUD - Inria, <i>Resp.</i> ARCHWARE, CELTIQUE, DIVERSE, HYCOMES, LOGICA, SUMO, TEA, TAMIS</p> <p>D5- Digital signals and images, Robotic (DSIR) Eric MARCHAND - UR1, <i>Resp.</i> EMPENN, OBELIX, PANAMA, RAINBOW, SIROCCO</p> <p>D6 - Media and interactions (MID) Bertrand COUASNON - INSA, <i>Resp.</i> EXPRESSION, HYBRID, INTUIDOC, LINKMEDIA, MIMETIC, PERCEPT</p> <p>D7 - Data knowledge management (DKM) Anne SIEGEL – CNRS, <i>Resp.</i> DRUID, DYLISS, GENSCALE, LACODAM, SEMLIS, SHAMAN</p>	<p>EIT Digital Rennes Alvaro PINA-STRANGER - UR1, <i>CLC Manager</i> EUR CyberSchool Frédéric RENOUARD – UR1, <i>Resp.</i> Pôle d'Excellence Cyber Jean-Marc JEZEQUEL - UR1, <i>Research coord.</i></p>	<p>Testing and Development (SED) Patricia BOURNAI - Inria, <i>Resp.</i> GenOuest support Olivier COLLIN - CNRS <i>Technical Resp.</i> Immersia support Ronan GAUGNE – UR1, <i>Technical Resp.</i> Grid'5000 support Pascal MORILLON – UR1, <i>Technical Resp.</i> RobStar support Fabien SPINDLER – Inria, <i>Technical Resp.</i> Neurinfo support Isabelle COROUGE – UR1, <i>Technical Resp.</i> (hors IRISA)</p>	<p>Team assistant Research (SAER) Cécile BOUTON - Inria, <i>Resp. (interim)</i></p>	<p>General assistance division (SAG) Marc MENEYROL - CNRS, <i>Resp.</i></p> <p>Department: Steering tool Marc MENEYROL - CNRS, <i>Resp.</i></p>					
	<p>Transversal axis</p> <p>Artificial Intelligence (AI) Olivier RIDOUX, UR1 Art, Patrimony & Culture Valérie GOURANTON - INSA Cyber-security Stéphanie DELAUNE – CNRS Biology Health Thomas GUYET – AGROCAMPUS Rennes Environment Ecology Nicolas COURTY – UBS & Claire LEMAITRE - Inria Green IT (Energy) Anne-Cécile ORGERIE – CNRS Robotics & Drone François BODIN & Vincent DREVELLE – UR1 Transport (Intelligent Transport System) Jean-Marie BONNIN - IMTA</p>	<p>DSI Inria / Team IRISA Nicolas GOUBLE - Inria, <i>Resp.</i></p>	<p>Branch IRISA</p> <p>Vannes IRISA (UBS) Frédéric GUIDEC - UBS, <i>Resp.</i></p> <p>Lannion IRISA (UR1) François GOASDOUE – UR1, <i>Resp.</i></p> <p>Rennes IRISA (IMT Atlantique) Yann BUSNEL – IMTA, <i>Resp.</i></p> <p>Rennes IRISA (INSA Rennes) Pascale SEBILLOT – IMTA, <i>Resp.</i></p>	<p>Financial resources NC</p> <p>Human resources Anne BUZARÉ - CNRS, <i>Resp.</i></p> <p>Communication resources Catherine JACQUES-ORBAN – UR1, <i>Resp.</i></p> <p>International relation Karine CHATEL – UR1, <i>Resp.</i></p> <p>EIT Digital Rennes Stéphanie GAUVAIN – UR1, <i>Resp.</i></p>					
<p>Test Platform</p> <table border="0"> <tr> <td>Immersia Georges DUMONT ENS, <i>Resp.</i></td> <td>Grid'5000 Anne-Cécile ORGERIE CNRS, <i>Resp.</i></td> <td>GenOuest Jacques NICOLAS Inria, <i>Resp.</i></td> <td>Neurinfo Emmanuel CARUYER CNRS, <i>Resp.</i></td> <td>RobStar Paolo ROBUFFO GIORDANO CNRS, <i>Resp.</i></td> </tr> </table>					Immersia Georges DUMONT ENS, <i>Resp.</i>	Grid'5000 Anne-Cécile ORGERIE CNRS, <i>Resp.</i>	GenOuest Jacques NICOLAS Inria, <i>Resp.</i>	Neurinfo Emmanuel CARUYER CNRS, <i>Resp.</i>	RobStar Paolo ROBUFFO GIORDANO CNRS, <i>Resp.</i>
Immersia Georges DUMONT ENS, <i>Resp.</i>	Grid'5000 Anne-Cécile ORGERIE CNRS, <i>Resp.</i>	GenOuest Jacques NICOLAS Inria, <i>Resp.</i>	Neurinfo Emmanuel CARUYER CNRS, <i>Resp.</i>	RobStar Paolo ROBUFFO GIORDANO CNRS, <i>Resp.</i>					